

TENSION-FINDER®

USER INSTRUCTIONS

The Tension-Finder® Can Be Used to Tension Individual V-Belts or V-Bands.

- The Tension-Finder should be used only with Timken® belts listed in Table 1
- The Tension-Finder should NOT be used with aramid, glass or carbon cord belts

⚠ WARNING: REMOVE THE TENSION-FINDER FROM THE BELT BEFORE STARTING THE DRIVE.

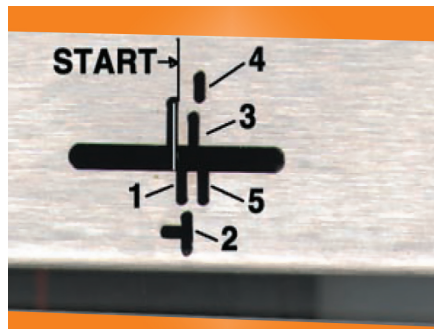
PROCEDURE:

Step 1: Install belts loosely on the drive.

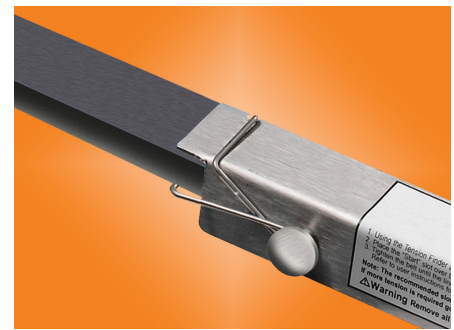
Step 2: Apply enough tension to take the slack out of the belts.



Step 3: Scribe a line on the belt using the Tension-Finder as a square. For cog belts, see the special instructions on page 2.



Step 4: Place the Start Slot over the line.



Step 5: With the line in the Start Slot attach the spring to the belt. Note: For cog belts, the best place for the spring may be in between the cogs.



Step 6: Scribe a line at the spring end of the Tension-Finder. Use this line as a reference point in case the spring slips off the belt.



Step 7: Determine the required slot for your drive from Table 1. Tighten the belt until the line has moved to the designated slot. (In this photo, the line is in Slot 3.)



Step 8: Remove the Tension-Finder from the belt, tighten mounting bolts, and replace belt guards. You're ready to start the drive!

TABLE 1: RECOMMENDED TENSIONING SLOTS

TIMKEN BELT TYPE	SLOT NUMBER	
	NEW BELT	USED BELT
<i>A, B, C, D, RB, RC, RD</i>	2	1
<i>A-R, B-R, C-R</i>		
<i>AX, BX, CX, DX, RBX, RCX</i>		
<i>AA, BB, CC</i>		
<i>3V, 5V, 8V, R3V, R5V, R8V</i>	3	2
<i>5VX, 8VX, R3VX, R5VX</i>		
<i>R5VL</i>		
<i>SPZ, SPA, SPB, SPC, XPZ, XPA, XPB, XPC</i>		

The recommended slot numbers in Table 1 will provide an adequate level of belt tension on average drives. If more tension is required, go to a higher slot number. For less tension, go to a lower slot number.

Note: Slots 4 and 5 on the Tension-Finder are provided for drives where the values in Table 1 do not provide adequate tension. Please consult Timken Belts Application Engineering before tensioning a drive to these slots.

⚠ WARNING: REMOVE THE TENSION-FINDER FROM THE BELT BEFORE STARTING THE DRIVE.

SPECIAL INSTRUCTIONS FOR COG-BELTS

If the spring clip will not sit securely on the flat area between cogs, take the following steps to scribe the line on the belt.



1. Place the spring in a cog groove.



2. Put a dot at the Start Slot. Be careful not to catch the pen in the slot – you may pull the tip out of the pen.



3. Scribe a line through the dot. The line should extend across the width of the Tension-Finder. Then go back to step 4 on page 1.



Timken Belts is part of The Timken Company's growing portfolio of engineered bearings and power transmission products. A manufacturer of premium performance power transmission belts, Timken Belts' associates and products help keep industry in motion and the world more productive.