

This selection of gearboxes, are designed specifically for use on grain handling augers. But can be used in other situations. The range includes standard fixed T designs, forward reverse models for direction change and a 45 degree angled box suitable for use on field bins.

Boxes from the genaral purpose section may also suit some applications.



FRA8 FORWARD REVERSE

GEARBOXES / AUGER BOXES / FRA8 FORWARD REVERSE



The FRA8 1:1 ratio forward reverse gearbox is designed for use on grain handling augers. The gear selector allows for forward, reverse or neutral movement.

Its new design offers:

- Increased HP rating. Now 30 HP @ 540RPM.
- Improved gear selector and shaft assembly.
- Improved internal gear mechanism.
- Mounting holes for safety covers.
- Mounting bolt pattern allows for easy replacement of old Andiline FR100 model gearboxes.

**Warning:** The gearbox shafts should be stationary before selecting gears. Any movement of the shafts during this procedure can cause unnecessary wear of the selector mechanism and will shorten the working life of the gearbox.

**Note:** The standard model offered is the FRA8 which is a 3 shaft T design box.

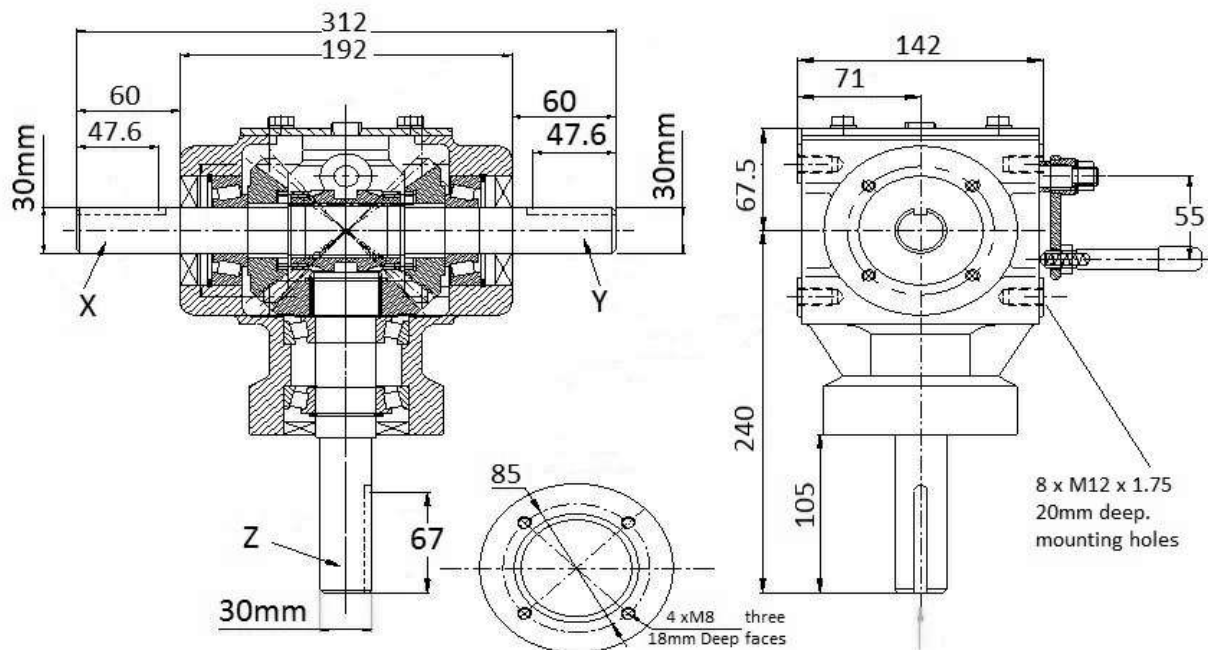
2 shaft or L versions are available for this gearbox only under volume OEM orders at this stage.

FRA8L. Left Hand output. Part AL01240

FRA8R. Right hand output. Part AL01237

Part number	AL01241
Model	FRA8
Gear ratio	1:1
Power rating	30HP (22KW) @ 540 rpm 46HP (33KW) @ 1000 rpm
Input torque	389NM @ 540 rpm 315NM @ 1000 rpm
Output torque	389NM @ 540 rpm 315NM @ 1000 rpm
Unit weight	16kg
Mounting	4 x holes at 88mm centres
Shafts	30mm diameter with 8mm key.
Lubricant	SAE 90 gear oil





## FRA821 FORWARD REVERSE REDUCTION

GEARBOXES / AUGER BOXES / FRA821 FORWARD REVERSE REDUCTION



The FRA821 forward reverse gearbox has a 2:1 reduction ratio that is designed for use on smaller grain handling augers.

New design offers:

- Ability to reduce auger speed without the use of belts or chains. This requires less space and reduces related OH&S issues.
- As a replacement gearbox for old equipment the FRA821 allows for the use of new 1000rpm PTO tractors without the use of additional gearing. (Subject to HP requirement).
- Sturdy gear selector and shaft assembly.
- Strong internal gear mechanism.
- Mounting bolt pattern allows for easy replacement of old Andiline FR100 model gearboxes.

**Warning:** The gearbox shafts should be stationary before selecting gears. Any movement of the shafts during this procedure can cause unnecessary wear of the selector mechanism and will shorten the working life of the gearbox.

**Notes:-** The standard model FRA821 offered is a 3 shaft T design box. 2 shaft or L versions are available for this gearbox only under volume OEM orders at this stage.

- Because of the gearing design in this model the "Z" shaft must be used as the input shaft.

Part number	AL02694
Model	FRA821
Gear ratio	2:1 reduction
Power rating	16HP (11.8KW) @ 540 rpm 24HP (18KW) @ 1000 rpm
Input torque	208NM @ 540 rpm 172NM @ 1000 rpm
Output torque	416NM @ 540 rpm 344NM @ 1000 rpm
Unit weight	17kg
Mounting	4 x holes at 88mm centres
Shafts	30mm diameter with 8mm key.
Lubricant	SAE 90 EP gear oil