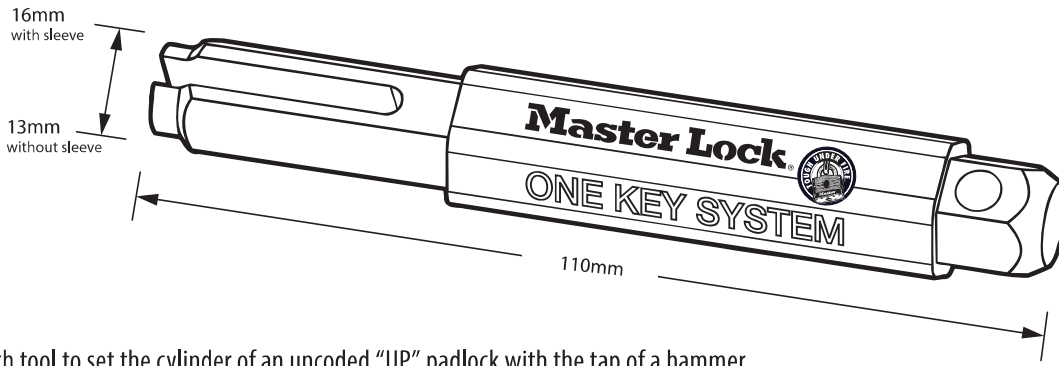


# KEYED ALIKE & KEYED TO DIFFER PROGRAMS

## UNIVERSAL PIN LOCKS (CRUNCHER) – BOX PACK

Master Lock's range of Universal Pin (Cruncher) Locks, allows you to add extra locks to your existing key profile 1K padlock system in a matter of minutes! Minimise your customers' keys and maximise your padlock sales with this innovative solution from Master Lock.

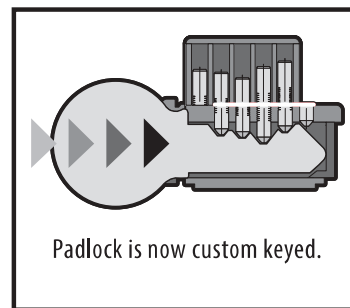
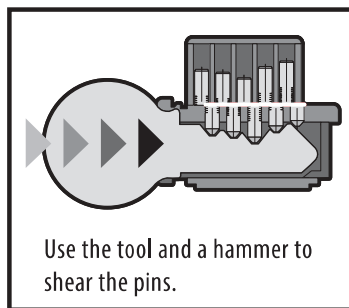
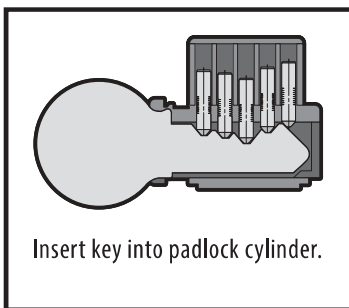


Punch tool to set the cylinder of an uncoded "UP" padlock with the tap of a hammer.

### KEYING INSTRUCTIONS:

1. Choose original Master Lock padlock key to be used and remove from ring.
2. Insert key into Master Lock "UP" series padlock and remove several times.
3. Insert key into Master "UP" series lock and invert padlock through the jaws of your bench vise. Do not tighten vise.
4. Place No. 0376 Keying Tool over key and tap with hammer until cylinder pins shear.
5. Remove padlock from vise and check for proper operation, turning key in lock several times.

### WHEN USING ANY TYPE OF STRIKING TOOL, WEAR SAFETY GLASSES!



Item Code	Description	GTIN	Pack Qty	Min. Order Qty	Key Profile	Shackle Dimensions (Metric)		
						A	B	C
<b>Available Keyed Alike Or Keyed To Differ</b>								
0003UP	Laminated Steel 40mm Wide Body – Steel Shackle	071649079757	6	1	1K	7mm	19mm	16mm
0003UPLF	Laminated Steel 40mm Wide Body – Extd Steel Shackle	071649083976	6	1	1K	7mm	38mm	16mm
0001UP	Laminated Steel 44mm Wide Body – Steel Shackle	071649079740	6	1	1K	8mm	24mm	19mm
0001UPLJ	Laminated Steel 44mm Wide Body – Extd Steel Shackle	071649083983	6	1	1K	8mm	64mm	19mm
0005UP	Laminated Steel 51mm Wide Body – Boron Shackle	071649079764	6	1	1K	10mm	25mm	24mm
0005UPLF	Laminated Steel 51mm Wide Body – Extd Boron Shackle	071649083990	6	1	1K	10mm	38mm	24mm
0376	Hand-Held Keying Punch Tool	-	1	1	N/A	-	-	-
0001B	Key Blanks For Universal Locks	071649481000	50	1	N/A	-	-	-