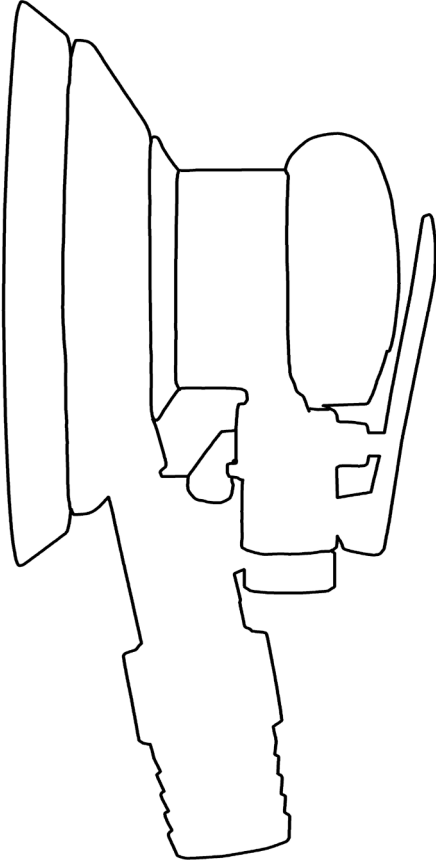


[www.workquip.com.au](http://www.workquip.com.au)



**12210**  
**150mm Pneumatic**  
**Palm Sander**



Congratulations on the purchase of your Workquip X1 Pneumatic Palm Sander.

Workquip is known throughout the industry for quality, affordable, and reliable tools and accessories.

To ensure your safety, and maximise the working life of this tool, please read the instructions carefully.

Workquip is distributed by GnG Sales Pty Ltd Australia (www.gngsales.com.au). 3 Foundry Road, Seven Hills, NSW 2147. 1300 769 109.

## Description

- Built-in regulator provides speed control, low vibration for greater user comfort,
- Ergonomic design, constructed with heat treated steel components for long life.
- 10000 RPM free speed
- 5mm Orbit for efficient stock removal

Part Number	12210
Back Up Pad Size	6"/150mm
Free Speed	10,000
Air Consumption	2.8cfm/ 79.2 l/m
Operating Pressure	90 psi
Weight	1 kg
Air Inlet	1/4"
Volume	100 db

## Important Safety Guidelines

- Inspect the tool for damage before every use.
- Check to ensure the back-up pad is securely affixed to the tool before use.
- Wear safety goggles and hearing protection.
- When sanding always wear an appropriate face mask or respiratory equipment.
- Ensure tool is switched off and placed upright before connecting to air supply.
- Disconnect the tool from the air supply before changing abrasives or servicing.
- Always keep the tool clean and lubricated. Blow dust from the tool using an air duster and lubricate daily to avoid internal corrosion, loss of power and premature wear.
- Avoid loose clothing when using air tools.
- Do not overload the machine. Allow the tool to operate at its optimum speed for maximum efficiency and not place excessive pressure on the tool.
- Do not exceed the recommended air pressure. Pressure above 90 psi will cause damage without improving performance.
- Ensure the tool has come to a complete stop before putting the tool down.
- Ensure that the work piece is firmly secured leaving both hands free to control the machine.
- Ensure sanding accessories are rated and designed for use with the tool.
- Do not start the tool until it is on the surface you intend to work on. Applying a moving tool to a surface can cause unintended damage.
- Using an air filter on the air line is highly recommended.



## Lubrication

- An automatic in-line filter-regulator-lubricator is recommended as it increases tool life and keeps the tool in sustained operation. The in-line lubricator should be regularly checked and filled with air tool oil.
- In the event that it becomes necessary to store the tool for an extended period of time, it should receive a generous amount of lubrication at that time. The tool should be run for approximately 30 seconds to ensure oil has been evenly distributed throughout the tool. The tool should be stored in a clean and dry environment.
- Only use specific air tool oil such as the Workquip Air Tool Oil. Do not use automotive engine oil.
- If a filter/regulator/lubricator is not installed on the air system, air operated tools should be lubricated at least once a day or after 2 hours work with 2 to 6 drops of oil, depending on the work environment, directly through the male fitting in the tool housing.

## Air supply

- Air pressure from an air filter regulator should be set at 90psi. Exceeding recommended air pressure and using unfiltered air will shorten the working life of the tool.
- Drain the air tank daily. Water in the airline will damage the tool.
- Clean air inlet filter weekly.
- Keep hose away from heat, oil and sharp edges. Check hose for wear and make certain that all connections are secure.

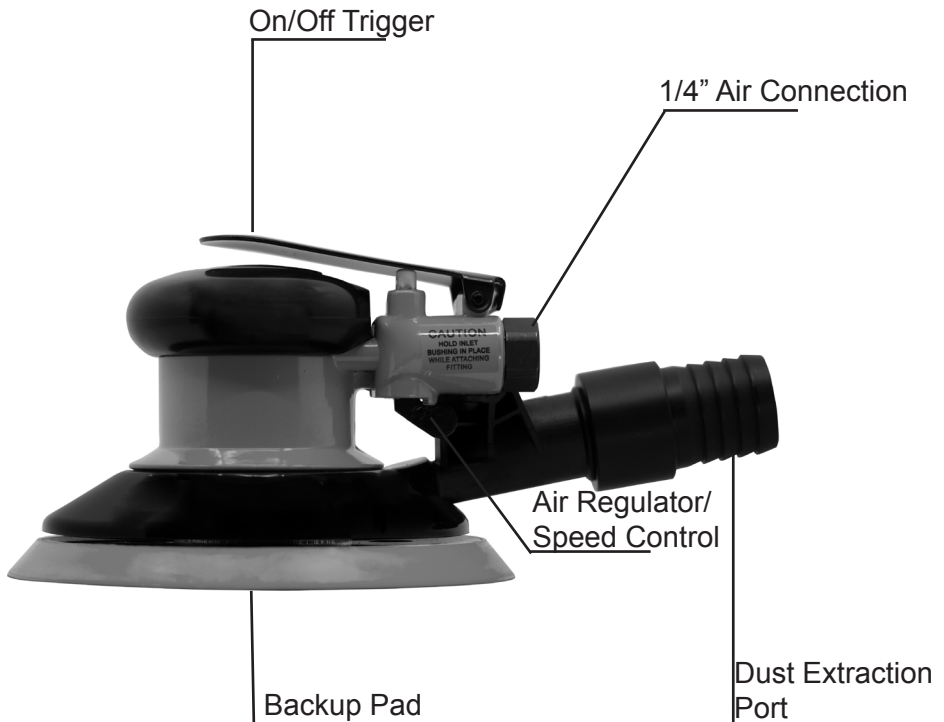
## Maintenance

These air sanders are relatively low maintenance. Follow the below procedures to maximise the working life of the tool.

- Drain water from the air compressor tank and air lines prior to use each day.
- Clean the tool after use with an air duster.
- Lubricate the air sander daily with a few drops of air tool oil into the air inlet.
- If you notice damage to the tool or backing pad, have it repaired before using the tool again. You can do this directly through the GnG Sales service centre. Visit [gngsales.com.au](http://gngsales.com.au) for details. Replacement backup pads are available.

## Operating Instruction

1. Turn the air compressor on and allow it to build pressure.
2. Adjust the air regulator supplying the tool air to 90PSI.
3. Attached the desired sanding disc to the tools backing pad.
4. Connect the air tool to the airline using your preferred air fitting connection. A 1/4" male connector (not included) is recommended.
5. Adjust the regulator control knob on the tool to the desired variable speed.
6. Set the tool on the working surface and gently press trigger. Move the sander slowly back and forth in wide overlapping areas. Let the sander do the work, do not apply excessive pressure on the tool. This slows down the speed of the pad, reducing sanding efficiency and can cause excessive wear on the tool and backing pad.



## Troubleshooting

### ***Loss of power or erratic action may be due to the following:***

- Insufficient air supply. – Check how many air lines are connect to the air compressor, or air line.
- Moisture or restriction in the air line. – Drian the air compressor and/ or install a filter regulator
- Incorrect size or type of hose connectors. – A ¼ BSP fitting on a 8 to 10mm air hose is recommended
- Grit, gum or dust deposits in the tool may also reduce performance. – Run a penetrating lubricant through the tool such as Inox MX3, WD40, CRC 5:56, followed by a few drops of Workquip Air Tool Oil 05100.

### ***Excess vibration from the tool may be caused by the following:***

- The backing pad may be loose or incorrectly fitted – remove the pad and refit properly
- The backing pad may be damaged – purchase a new pad.
- The incorrect backing pad may be on the tool – remove and replace with the correct backing pad
- The pad and or sanding discs may be clogged with dust – use an air duster to blow out the backing pad and replace the sanding disc

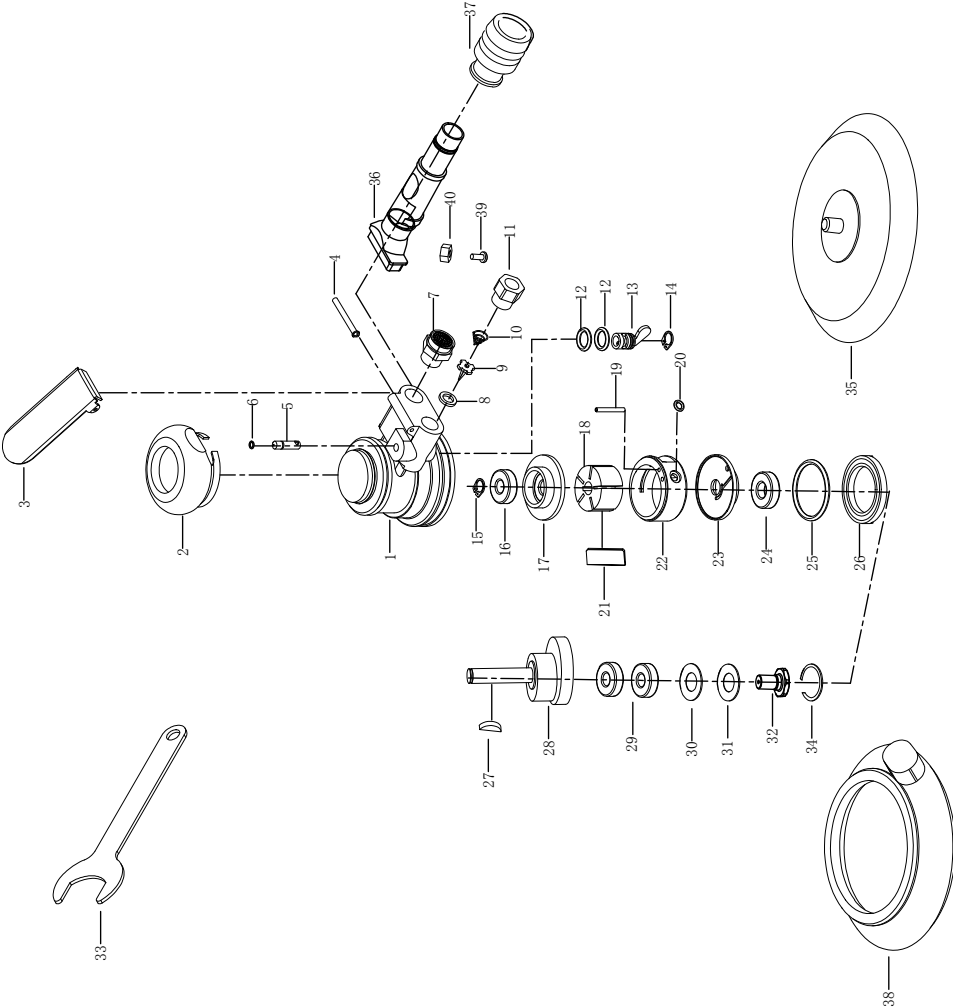
## Spare Parts

Spare parts are available for this model.

**Replacement Back Up Pad** – Workquip 150mm Hook On 7 Hole.  
(Part Number: 12318)

**Air Tool Oil** - Workquip Air Tool Oil 500ml  
(Part Number: 05100)

For further assistance, warranty claims or service enquires please visit  
[www.gngsales.com.au](http://www.gngsales.com.au)



No.	Part Desc.	Qty.
1	Housing	1
2	Housing Grip	1
3	Lever	1
4	Spring Pin	1
5	Valve Stem	1
6	Valve Stem O-ring	1
7	Exhaust Adapter	1
8	Valve Seat	1
9	Valve Tip	1
10	Spring	1
11	Inlet Adapter	1
12	O-Ring	2
13	Regulator	1
14	Snap Ring	1
15	Retain Ring	1
16	Ball Bearing	1
17	Rear End Plate	1
18	Rotor	1
19	Spring Pin	1
20	O-Ring	1
21	Rotor Blade	5
22	Cylinder	1
23	Front End Plate	1
24	Ball Bearing	1
25	O-Ring	1
26	Lock Ring	1
27	Woodruff Key	1
28	Counterbalance	1
29	Ball Bearing	2
30	wool gasket	1
31	Washer	1
32	spindle	1
33	Pad Wrench	1
34	Snap Ring	1
35	PAD	1
36	Adapter	1
37	cv Flitting	1
38	Shroud Guard	1
39	screw	1
40	screw	1

## Warranty Against Defects

**This warranty is given by:** Portbid Pty Limited ACN 050983483 trading as GnG Sales

**Physical Address:** 3 Foundry Road, Seven Hills, NSW.

**Postal Address:** Phone: PO Box 1390, Baulkham Hills, NSW, 1755

**Contact Number:** 1300 769 109

### Warranty

GnG Sales warrants that this product is free from defects in workmanship and materials used in the manufacture of the product for a period of 12 months from the date of purchase (Warranty Period). The benefit given by this warranty are in addition to other rights and remedies you, the consumer, may have under the law in relation to the product to which this warranty relates.

What you must do to entitle you to claim this warranty- You must, at your expense, return the product to either GnG Sales (addresses set out above) or the place the product was purchased with the original proof of purchase such as a receipt or invoice within the Warranty Period. The product must not have been tampered with, defaced or modified in any way and if the product was purchased with a serial number, the serial number must not have been removed, defaced or changed.

What GnG Sales must do - If the product is covered by this warranty and you comply with the conditions of this warranty GnG Sales will repair or replace (at GnG Sales' election) the product and return it to you free of charge. If the product is not covered by this warranty or you do not comply with the conditions of this warranty, GnG Sales will notify you as such and you may, at your expense, choose to have the product repaired and/or returned to you. GnG Sales will not be responsible for any loss or damage caused by shipping the product to you.

Exceptions:

This warranty does not cover:

1. any failure or defect of the product which is caused by:
  - a. damage caused during shipping;
  - b. any modification(s) to the product;
  - c. misuse including use of accessories and consumables which have not been recommended by the manufacturer;
  - d. improper installation or operation of the product; or
  - e. other abuse of the product.
2. damage or failure due to water in air lines, failure to appropriately lubricate or incorrect oil used as lubricant.
3. accessories or consumables such as springs, blades, chisels, cutting edges, or normal wear and tear on parts such as hammer pins, anvils etc.

Our goods come with guarantees that cannot be excluded under the Australian Consumer Law. You are entitled to a replacement or refund for a major failure and compensation for any other reasonably foreseeable loss or damage. You are also entitled to have the goods repaired or replaced if the goods fail to be of acceptable quality and the failure does not amount to a major failure.

**Workquip specialises in Pressure Pots, Spray Equipment, Air Line components and Surface Reconditioning tools and accessories. To see the full range visit**

**[www.workquip.com.au](http://www.workquip.com.au)**

Workquip is a GnG Sales brand.

[www.gngsales.com.au](http://www.gngsales.com.au)

3 Foundry Road, Seven Hill, NSW 2147 Australia

1300 769 109