

Makita

230mm (9") Angle Grinder

240v

GA9081FX1



230mm (9") Angle Grinder

Introducing the Makita 230mm (9") Angle Grinder (GA9081FX1), engineered for superior performance and user safety. This robust tool is equipped with a high-performance 2,400W motor, making it ideal for demanding industrial applications. Designed with user safety in mind, the GA9081FX1 features a two-stage trigger, ensuring added security during operation. The soft start function provides smooth operation while the anti-restart protection prevents accidental start-ups, enhancing overall safety and control.

User comfort is paramount with the vibration-proof side grip, significantly minimising user fatigue during extended use. Whether you are cutting, grinding, or polishing, the Makita GA9081FX1 is built to deliver exceptional results with reliability and efficiency. Experience the power and precision of Makita's engineering excellence with this top-tier angle grinder.



Product Overview

240v

Soft Start

Torque Limiter

Anti-Restart Protection

High Performance 2,400W Motor

Two Stage Trigger Switch

Vibration Proof Side Grip



Product Specification Sheet

240V



Wheel Diameter	230mm (9")
Hole Diameter	22.23mm
Spindle Thread	M14
No Load Speed	6,600rpm
Continuous Rating Input	2,400W
Overall Length	461mm
Net Weight	6.3kg
Power Supply Cord	2.0m

- **Soft Start** – When the trigger is pressed the wheel will start slowly to reduce initial start up shock, then rapidly accelerate to maximum speed.
- **Torque Limiter** – Limits the power at start-up and during heavy duty applications to protect the mechanical components.
- **Anti-Restart Protection** – If there is a power disruption and the switch remains in the on position the tool will not restart until the user releases and reengages the two-stage trigger switch.
- **High Performance 2,400W Motor** – Features a powerful 2,400-watt motor for industrial applications.
- **Two-Stage Trigger Switch** – The switch requires two stages of action before the tool will start, this helps avoid accidental operation. The tool will shut down if the user releases the trigger switch and will need to be reengaged.
- **Vibration Proof Side Grip** – The inclusion of a vibration proof side grip allows users to better control the tool ergonomically.

Performance



2,400-Watt motor allows for continuous heavy-duty operation.

Safety



Anti-restart protection and soft start to enhance user safety.

Durability



Engineered for increased durability and longer tool life.

Comfort



Vibration proof side grip minimises user fatigue.

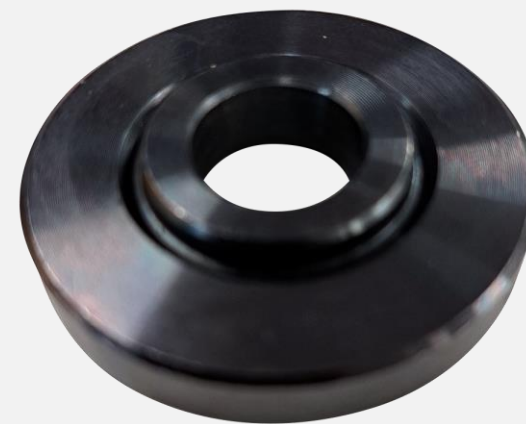
Makita Super Flange

The GA9081FX1 comes standard with the Makita Super Flange. The super flange is a larger and thicker inner flange that is used on 7+9" (180+230mm) angle grinders without electric or mechanical brakes.

The super flange has a built-in mechanism that allows the user to remove the lock nut with less effort compared to regular inner flanges.








Super Flange



Regular Flange

Our Range

240v

	NEW – GA9081FX1	GA9070X1	GA9071X1	GA9080FX1	GA9060
					
Wheel diameter	230mm (9")				
No Load Speed	6,600rpm				
Continuous Rating Input	2,400W				2,200W
Active Feedback Sensing Technology (AFT)	✗	✓	✓	✗	✗
Brake System	✗	Mechanical Brake	Mechanical Brake	✗	✗
Anti-Restart	✓	✓	✓	✓	✗
Soft Start	✓	✓	✓	✓	✗
Anti Vibration Housing	✗	✓	✓	✓	✗
Vibration Proof Grip	✓	✓	✓	✓	✗
Handle Type	Straight Handle	Straight Handle	D-Handle	Straight Handle	Straight Handle
Overall Length	461mm	506mm	506mm	509mm	450mm
Net Weight	6.3kg	6.3kg	6.4kg	6.5kg	5.5kg

Standard Accessories

	162264-5	Vibration Proof Grip
	782034-2	Lock Nut Wrench 35
	122444-5	Inner Super Flange
	224485-8	Lock Nut
	224256-3	Cutting Outer Flange 78
	224257-1	Cutting Inner Flange 78

Optional Accessories

	122913-6	230mm Cutting Guard
	198379-2	230mm Dust Collecting Wheel Guard Plunge
	Catalogue	Grinding Wheels
	Catalogue	Cutting Wheels
	Catalogue	Diamond Cutting Wheels