

Description

The 5005AN2 refueling drum pump is designed for the transfer of fuels and lubricants up to SAE30. This economical and hard working drum pump has a delivery rate of approximately 1L per stroke or approximately 40L/min. Lightweight, the pump is supplied with 2.4m of delivery hose, a versatile metal delivery spout and a spout holster. The simple and proven design of the 5005AN2 makes this pump the ideal drum pump for fuel and lubricant transfer in challenging and harsh operating environments.

Specifications

Use	Petrol, diesel, kerosene and lubricants up to SAE30 from 60L or 205L drums
Discharge Volume	40 L/min or 1L per stroke
Inlet/Outlet	Inlet: 1" BSP Outlet: 1" BSP
Hose	2.4m x 1" ID fuel resistant hose
Materials	Aluminium handle, aluminium body with POM piston and piston rings

Fitting the telescopic downtube to the pump

Screw the downtube to the pump, carefully applying the thread tape to the thread on the downtube to ensure there are no air leaks between the downtube and the pump inlet whilst securing the downtube firmly in place.

Fitting the pump to the drum or tank

- 1 Pull out the short tube to the fully extended position then place the pump in the drum or tank.
- 2 Screw the pump to the drum or tank firmly.

Fitting the hose to the pump (Sequence Is Important)

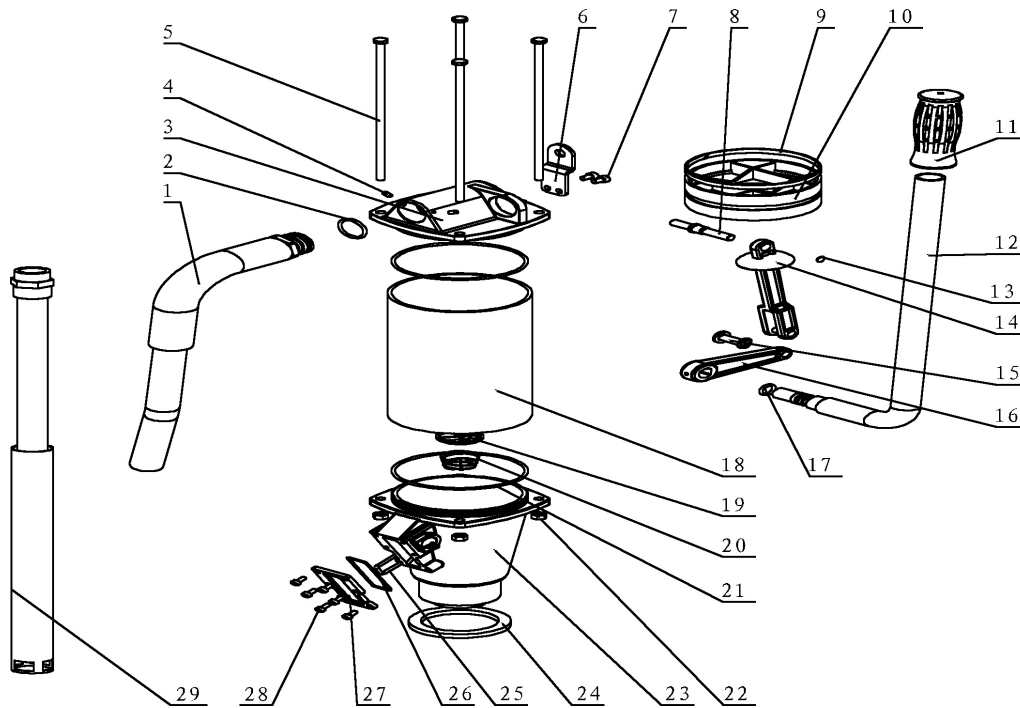
- 1 Place the hose & spout in the hose holster. (The locking pin on the spout engages in the keyway at the extreme left of the holsters opening).
- 2 Turn the spout fully clockwise to ensure that when fully assembled, the nozzle locking pin rests vertically within the holster.
- 3 Fit the hose clamp loosely to the end of the hose and slide the spring down onto the hose.
- 4 Push the hose end onto the pump outlet, slide the hose clamp over the hose at the outlet and tighten. Slide the hose spring up against the hose clamp. Check that the spout locking pin is still in a vertical position inside the holster. If not, adjust the hose position on the spout to correct this.

Pump Operation

When the handle is pulled back, the piston is pushed up by the con rod and the valve closes. At the same time fuel or lubricant on the top of the piston is discharged through the hose. When the handle is pushed forward, the piston is pulled down by the cross bar and the valve is opened. The fuel or lubricant then flows past the valve through the centre of the piston and fills the cylinder above the piston. The inlet valve is closed during this stroke.



Parts and Drawing Breakdown For The 5005AN2



Ordering Spare Parts

Parts List – Part No. 5005AN2

ITEM	DESCRIPTION	QTY	ITEM	DESCRIPTION	QTY
5005AN2-1	Hose Set	1	5005AN2-16	Clevis	1
5005AN2-2	O Ring	1	5005AN2-17	O Ring Gland	1
5005AN2-3	Body - Upper Assembly	1	5005AN2-18	Cylinder	1
5005AN2-4	Hex Screw	2	5005AN2-19	Inlet Valve	1
5005AN2-5	Bolts Set	4	5005AN2-20	Spring	1
5005AN2-6	Plate	1	5005AN2-21	O Ring	2
5005AN2-7	Hex Screw	2	5005AN2-22	Nuts	4
5005AN2-82	Cross Bar	1	5005AN2-23	Body - Lower Assembly	1
5005AN2-9	Washer	1	5005AN2-24	Locking Pin	1
5005AN2-10	Piston	1	5005AN2-25	Pin	1
5005AN2-11	Handle Grip	1	5005AN2-26	O Ring	1
5005AN2-12	Pump Handle	1	5005AN2-27	Cover	1
5005AN2-13	Bearing Spring	1	5005AN2-28	Pan Head Screw	6
5005AN2-14	Connecting Rod Assembly	1	5005AN2-29	Down Tube	1
5005AN2-15	Clevis Screw	1			

Trouble Shooting

TROUBLE	CAUSE	REMEDY
Fuel leaks at the retainer plate	O Ring seal worn or damaged	Replace O Ring
Handle is loose and unit will not pump	Clevis is broken or the connecting rod pin is dislodged	Replace the clevis or locking pin
Pump continues to syphon even after one stops pumping the handle	Spout is lower than the container	Return spout to spout holster
Pump fails to prime	The piston rings are worn out	Replace piston rings
Pump fails to prime	The downtube and the pump head thread connections are not airtight	Reconnect the threads using thread tape
Experiencing problems priming the pump	Air in the downtube, pump head and hose assembly	Ten to fifteen long, hard strokes of the handle are needed to prime the pump

NSW

TEL: (02) 9939 0711

FAX: (02) 9939 0411

QLD/PNG

TEL: (07) 3204 9166

FAX: (07) 3204 1224

VIC/TAS

TEL: (03) 8787 8288

FAX: (03) 8787 8266

WA

TEL: (08) 9302 4199

FAX: (08) 9303 2095

SA/NT

TEL: (08) 8241 7111

FAX: (08) 8241 7011

NZ

TEL: (09) 447 1007

FAX: (09) 447 1008

Further Trouble Shooting

TROUBLE SHOOTING

Trouble	Remedy
Important information for increasing the life of your 5005AN2 pump	<p>Please note that while the 5005AN2 materials offer excellent compatibility for most oils and fuels, some fuels will “dry out” the internals of the pump causing parts “to stick” and the priming action of the pump reduced. To stop this from happening, and to increase the working life of your pump, we strongly recommend that at the end of each day you lubricate the vanes of the pump by adding a few drops of oil to the internals of the pump via the outlet opening. By lubricating the vanes and then rotating the handle around two or three times at the end of each day or at the end of a production run, you will ensure that the internals of the pump are well lubricated. This practice will also ensure that the next time you go to use the pump the handle will rotate smoothly and easily through its rotation and the pump will prime instantly.</p>
Pump does not pump	Check suction tubes to make sure they are airtight.
Handle is stiff to turn	<ol style="list-style-type: none">1. Lubricate with drops of oil. Rinse pump with water or other suitable solvent for chemical being pumped.2. Open pump body and clean internal parts so they rotate freely.3. If rotor or vanes are swollen from chemical permeation, they may need to be replaced.

NSW
TEL: (02) 9939 0711
FAX: (02) 9939 0411

QLD/PNG
TEL: (07) 3204 9166
FAX: (07) 3204 1224

VIC/TAS
TEL: (03) 8787 8288
FAX: (03) 8787 8266

WA
TEL: (08) 9302 4199
FAX: (08) 9303 2095

SA/NT
TEL: (08) 8241 7111
FAX: (08) 8241 7011

NZ
TEL: (09) 447 1007
FAX: (09) 447 1008